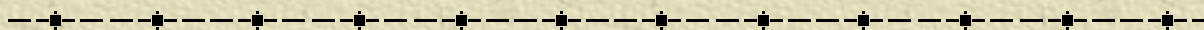


Disseminating weather and other emergency management information



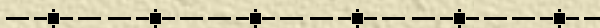
Bob Glancy, National Weather Service

Kevin Stewart, Urban Drainage and Flood Control District

Front Range Emergency Management Forum Meeting

Parker City Hall

December 11, 2002



Two-part presentation

I. Weather

- ✦ NWS EMWIN—
Emergency Managers
Weather Information
Network
- ✦ Local customization and
rebroadcast of EMWIN
and other products.

II. Other Notifications

- ✦ Media alerts
- ✦ School closings
- ✦ Ozone warnings
- ✦ Regional Amber Plan
- ✦ EOC activations
- ✦ Terror threats/incidents
- ✦ Other examples

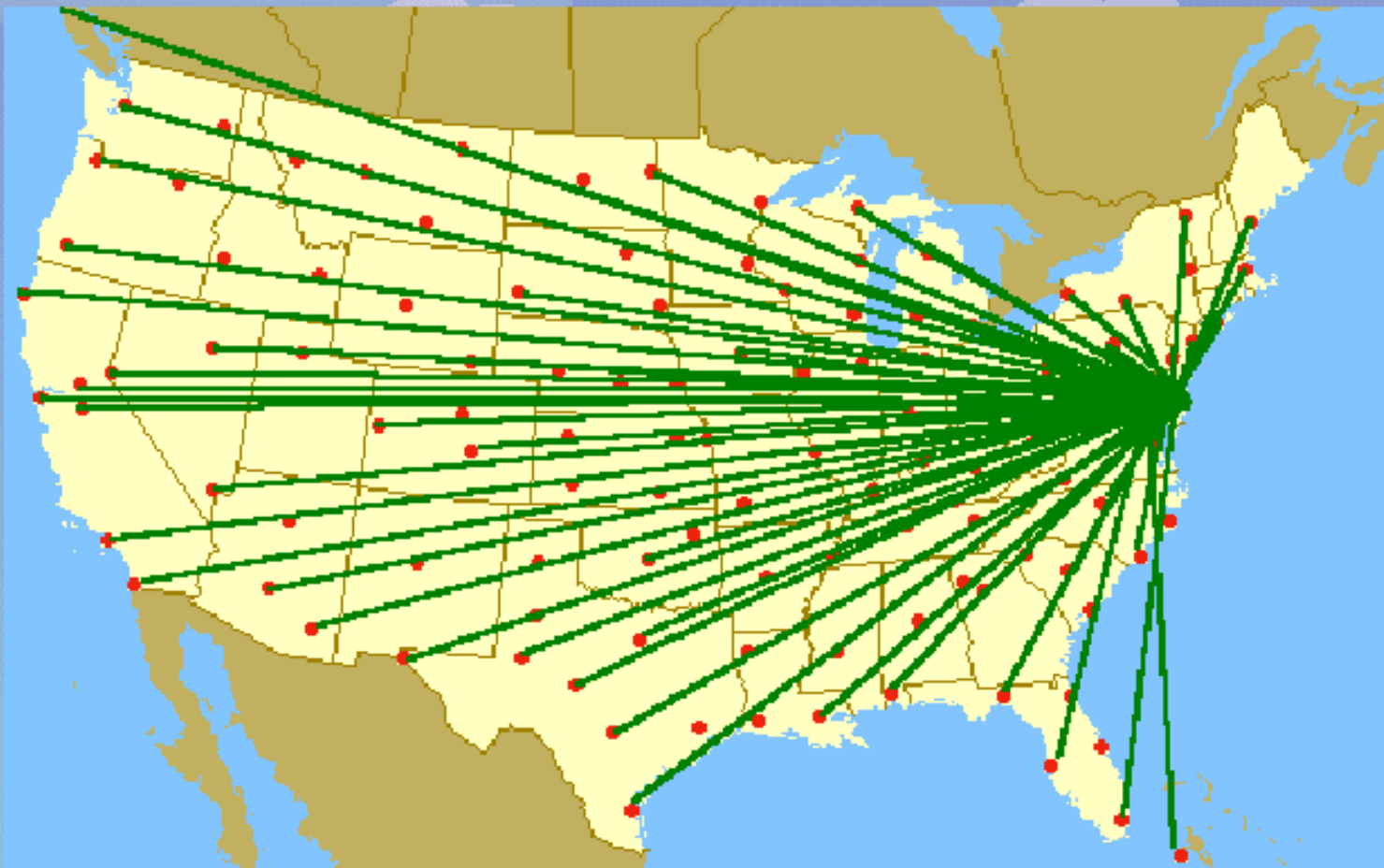
A working model—Harris County, Texas
Internet-based technologies



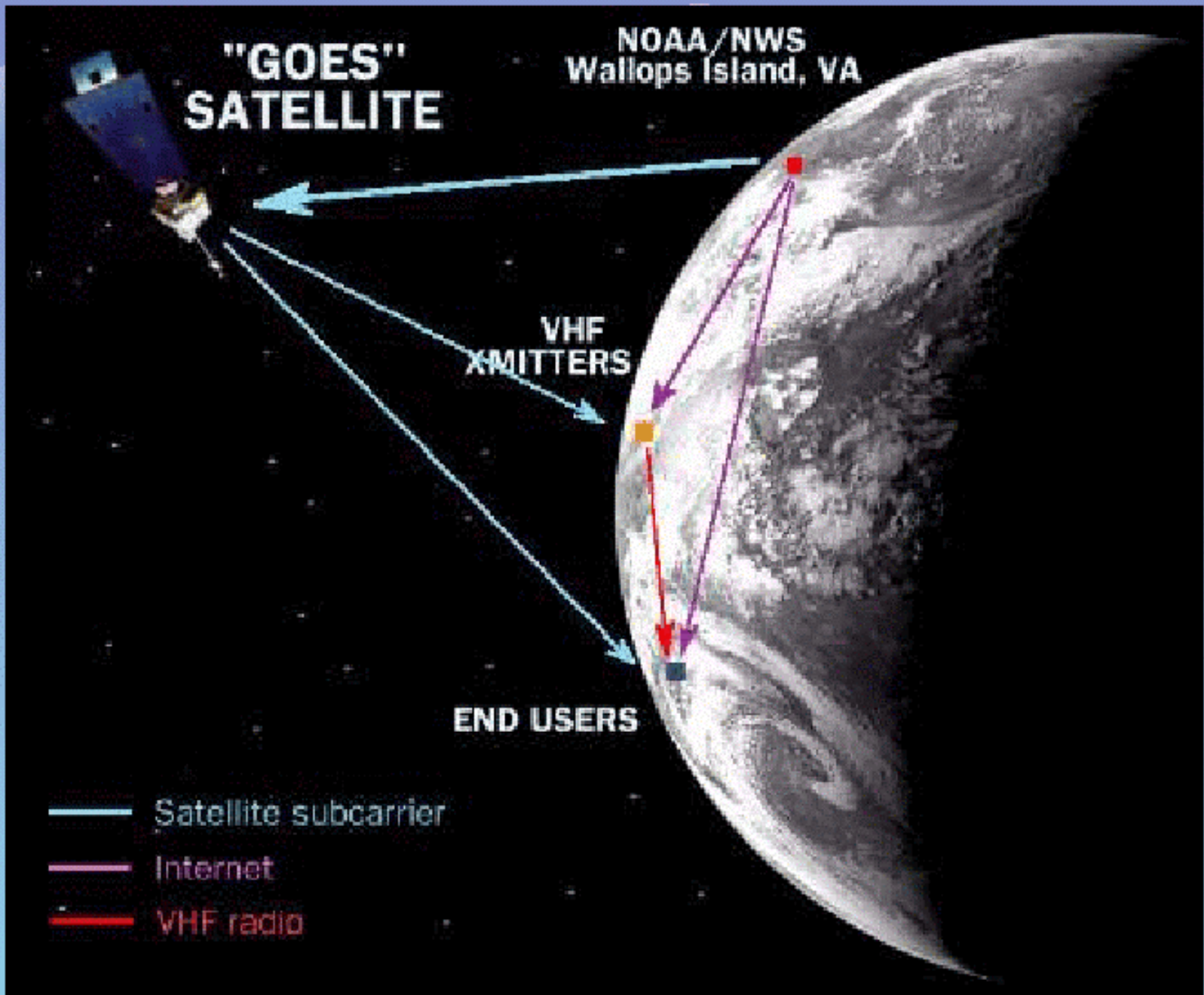
National Weather Service EMWIN

Emergency Managers Weather
Information Network

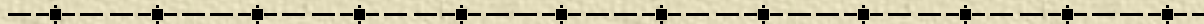
How does EM *WIN* work?



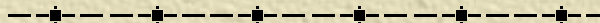
NWS products are sent to Wallops Island Virginia for satellite uplink.



Thank you
Bob!



You can sit down now.



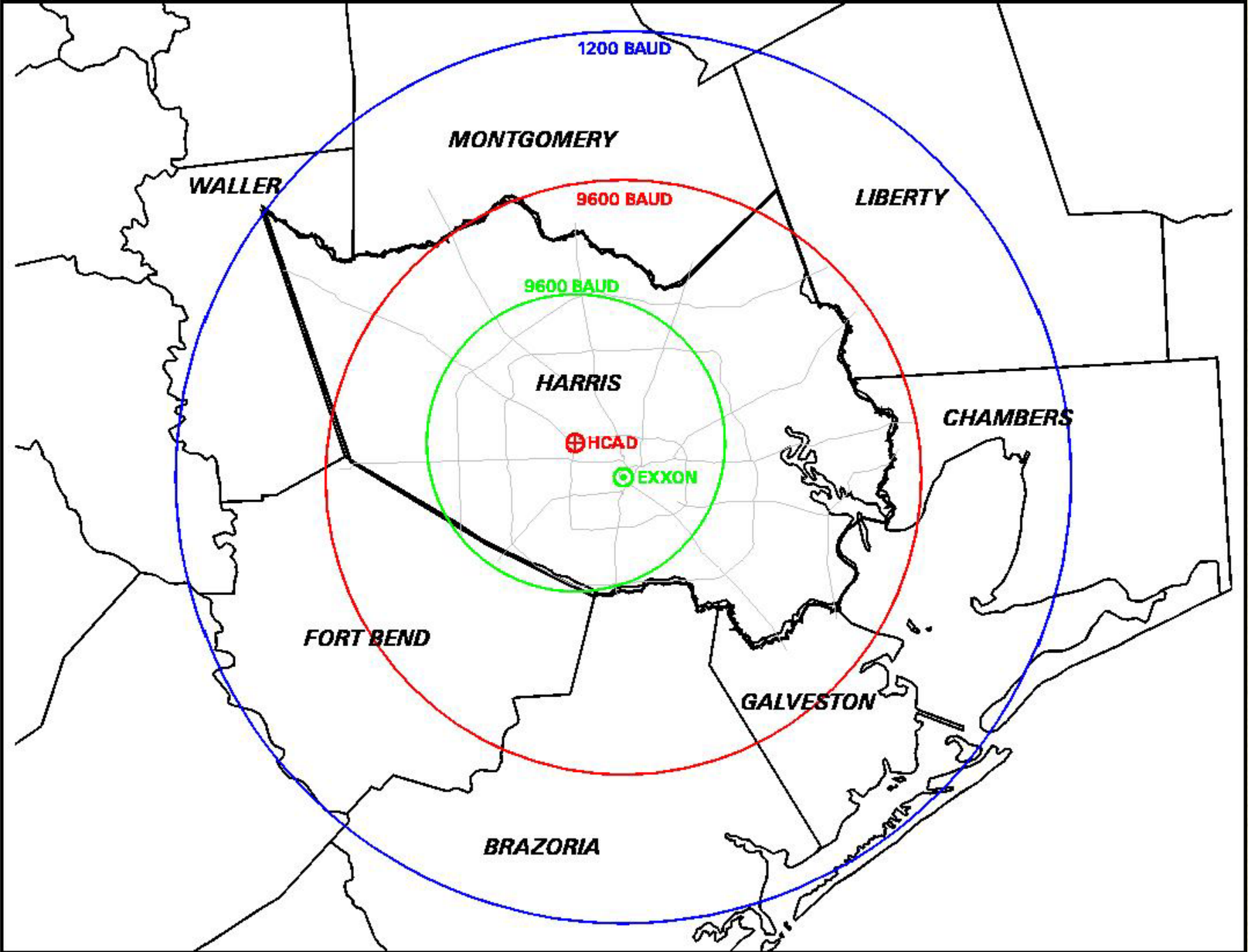
EMWIN Users in Houston, Texas

- ✦ Harris County Government Offices
- ✦ Galveston and Fort Bend County EOCs
- ✦ Area Cities
- ✦ Harris County Sheriff and Constable Patrol Vehicles
- ✦ Refineries and Manufacturing Plants
- ✦ Lifeflight Dispatcher
- ✦ Six Flags Astroworld
- ✦ Skywarn Volunteers
- ✦ PBS Stations
- ✦ Independent School Districts

Typical Patrol Car Installation



Broadcast Coverage Area



EMWIN Downlink Antennas



Broadcast Control Point

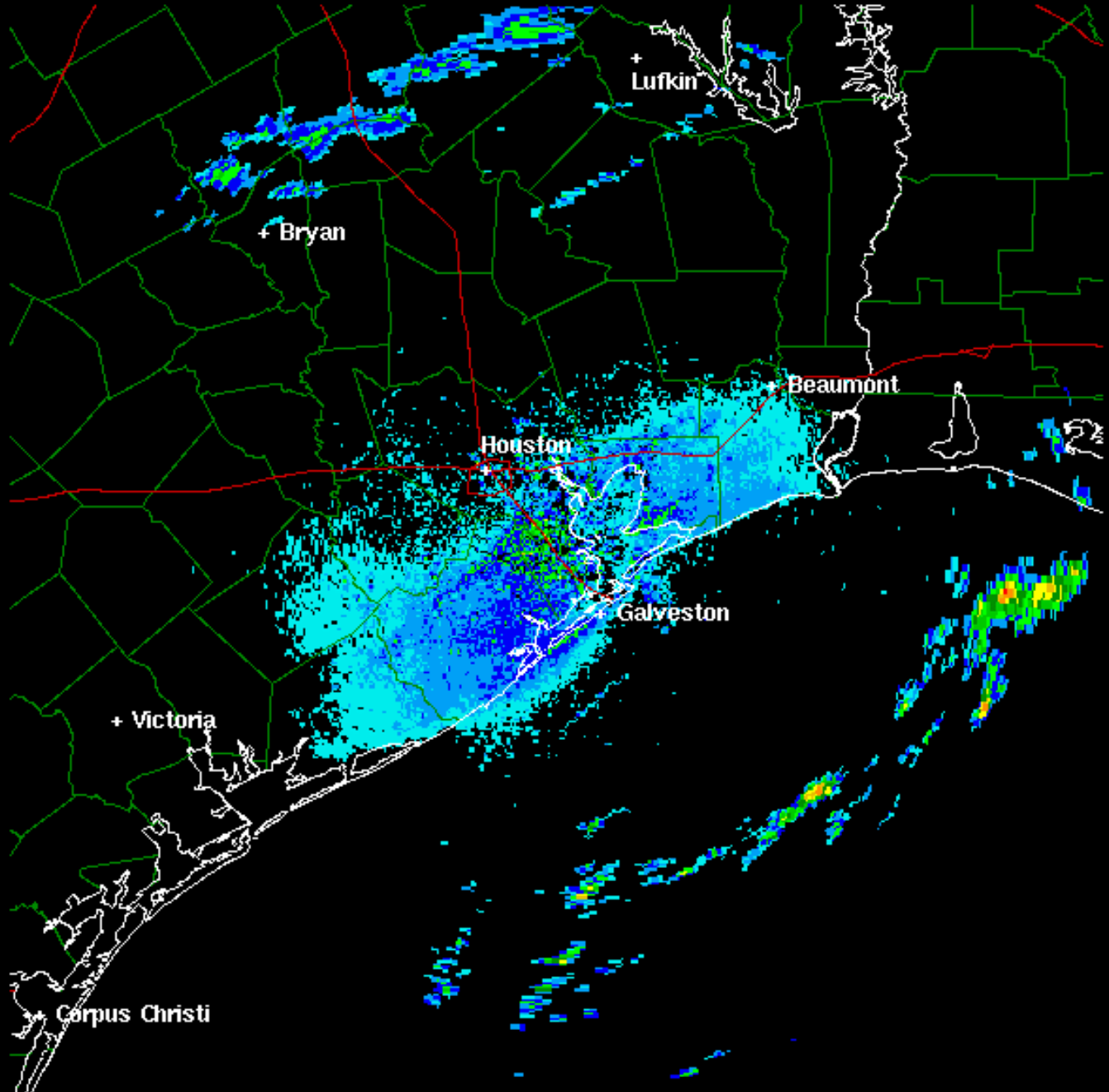


Control Point Configuration

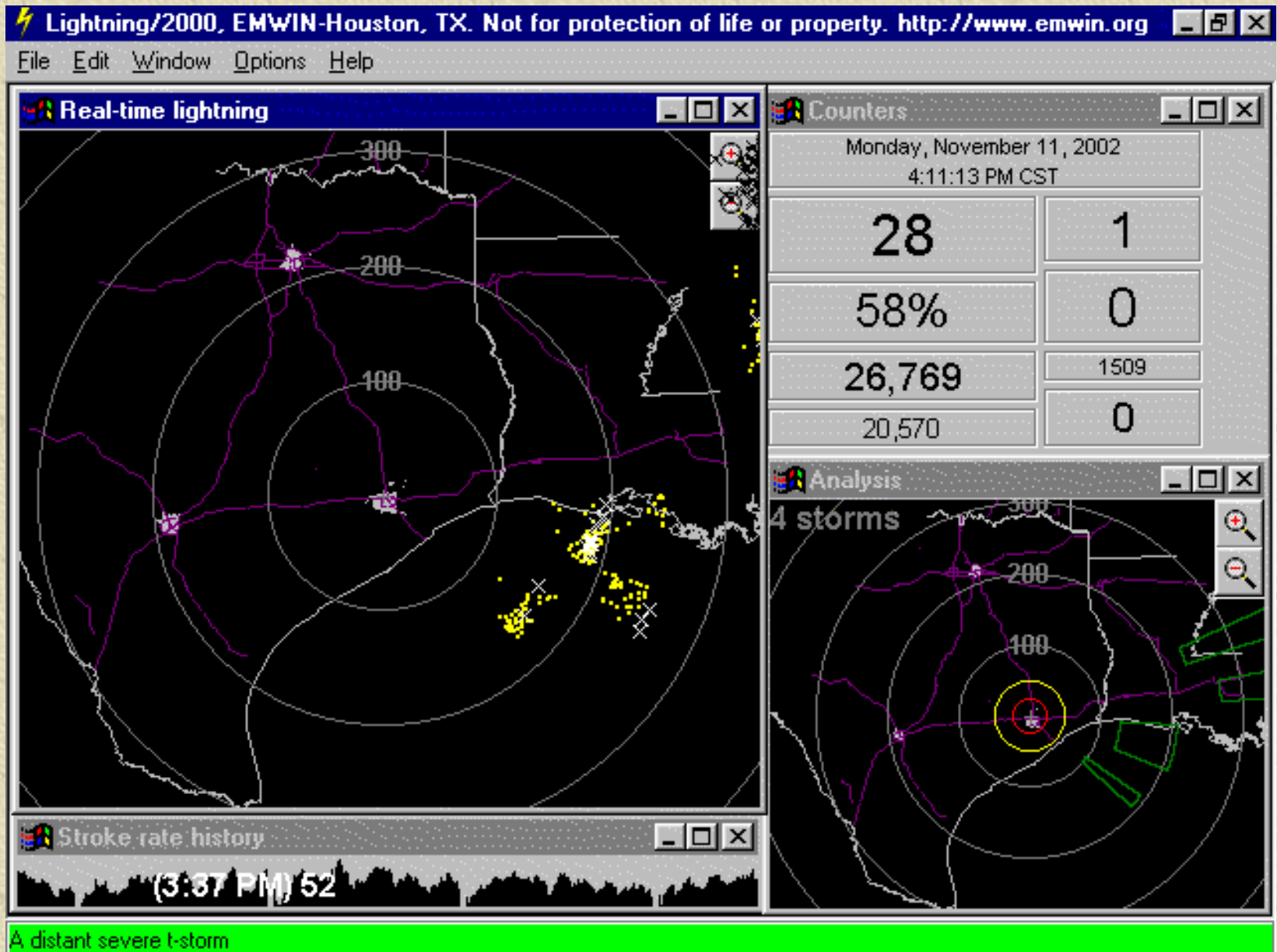
- ✦ Web and mail list server
- ✦ Weather email & paging servers (*automated*)
- ✦ Current Radar
- ✦ Lightning detector
- ✦ VHF broadcast servers (1200 & 9600 baud)
- ✦ Off-air monitor



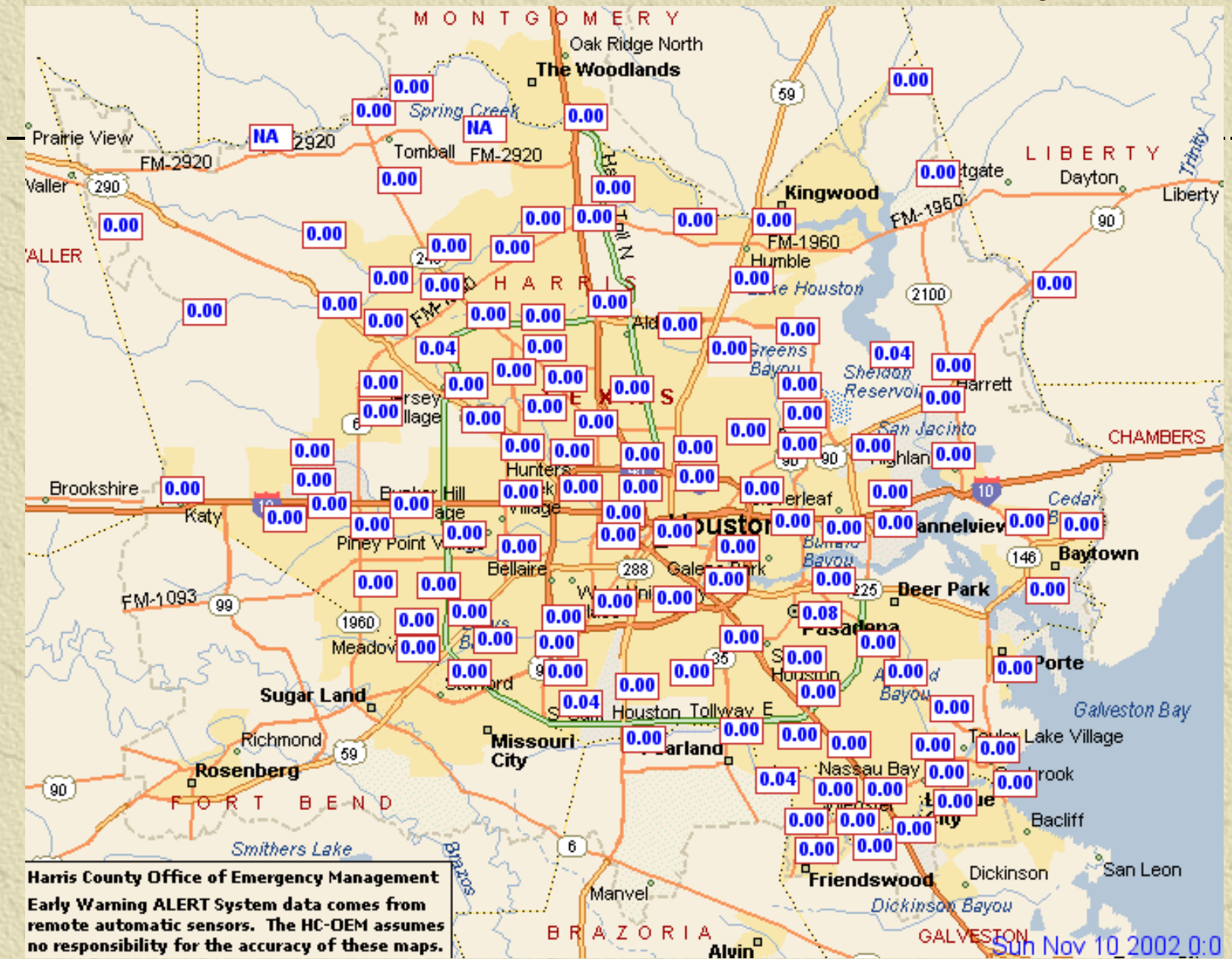
DBZ

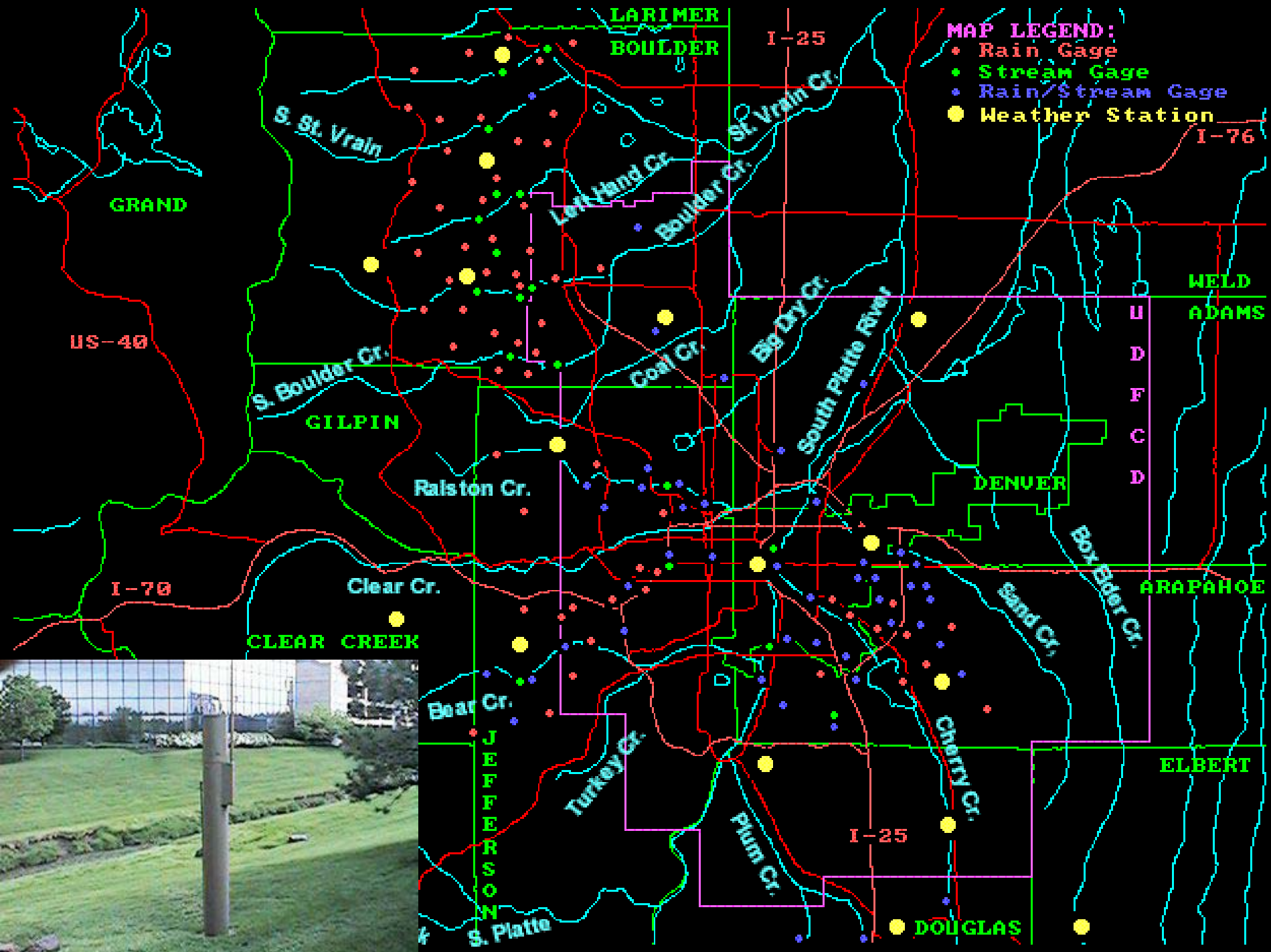


Lightning Detection—a local add-on

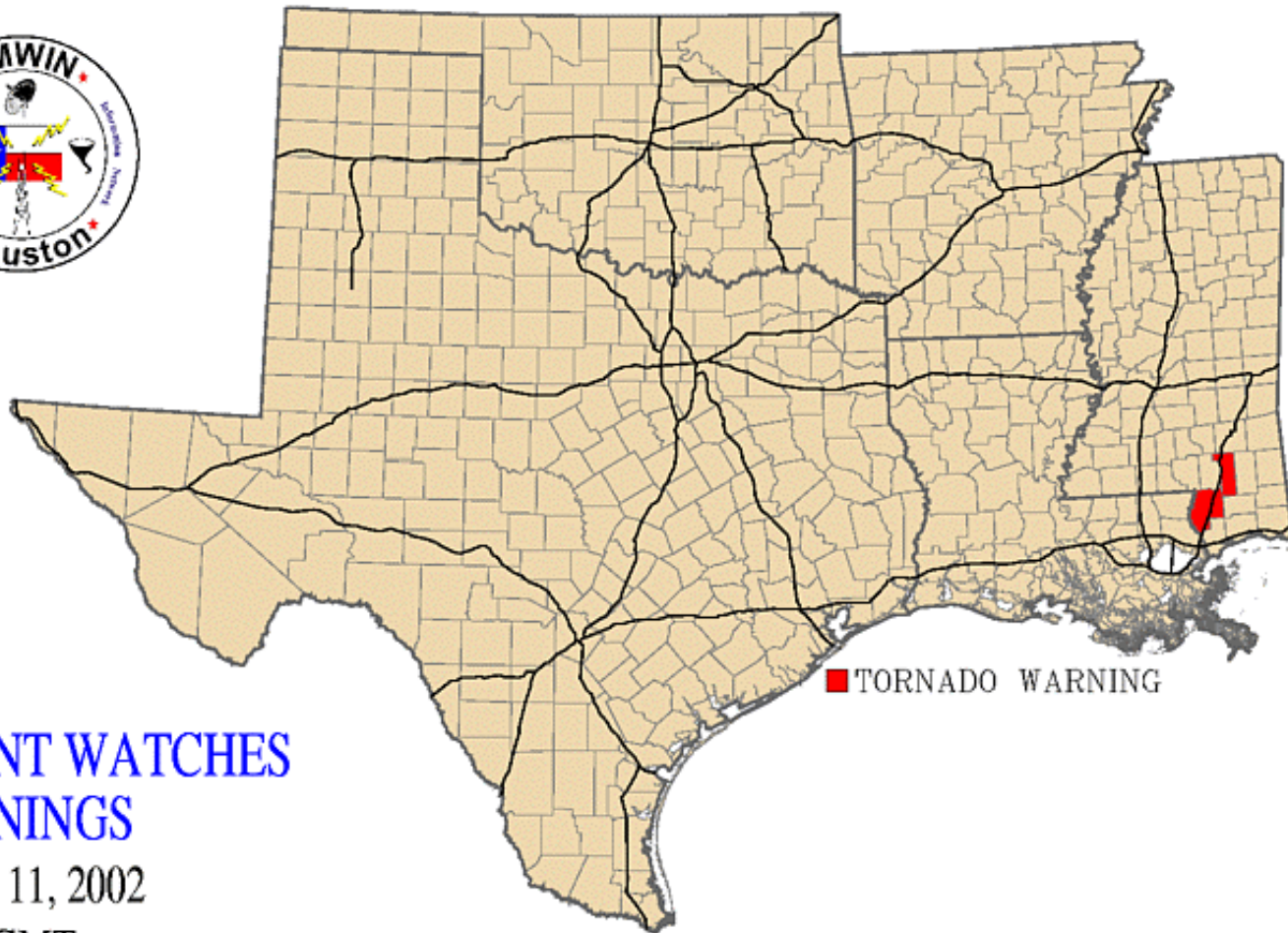


Real-Time rainfall from ALERT System





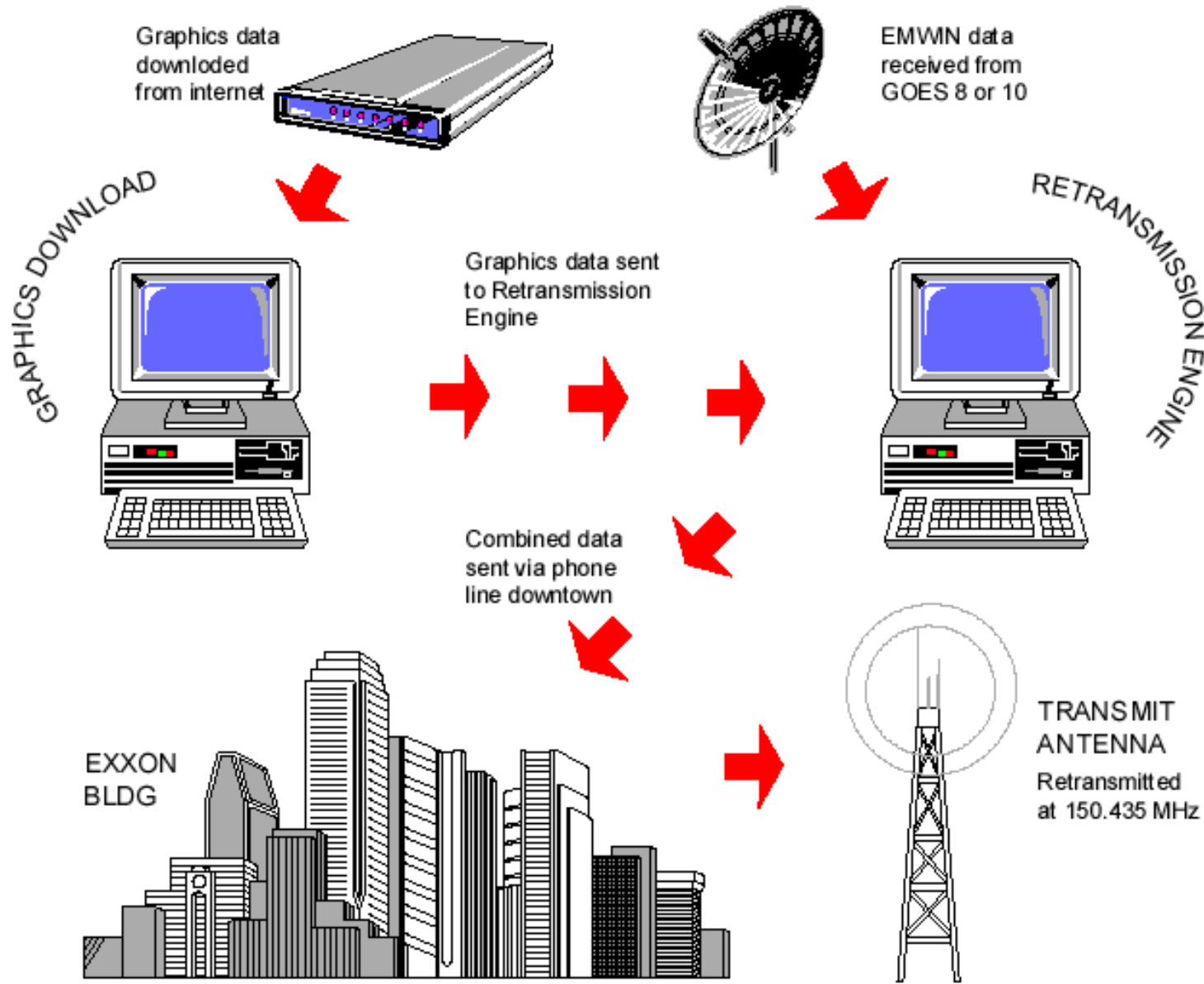
Regional Weather Warnings



**CURRENT WATCHES
& WARNINGS**

November 11, 2002
23.21.19 GMT

EMWIN Houston - Method of Dissemination



Part II—disseminating other types of emergency information

- ✦ **Information Examples:** Media alerts, school closings, air quality warnings, road closures, regional Amber plan, EOC activations, terror/incidents
- ✦ **Common Methods:** phone, radio, pager, CCIC, cell phone, NAWAS, EAS, METS, news media.
- ✦ **Other Methods:** automated procedures using Internet/Intranet technologies—the Houston model.

Discussion items and some decisions to make...

- ✦ Is the Houston model workable here?
(*EMWIN & Internet Dissemination*)
- ✦ Are Internet communications an acceptable alternative for METS? (*Kim Stiegelmeier*)
- ✦ Who should be the lead agencies?
- ✦ Who can help with a preliminary design for EMWIN downlink/rebroadcast system?
- ✦ Where can equipment be located?
- ✦ Who will be responsible for maintenance?